



设计人员: 金陈涛

邮箱: chentao.jin @yat.com

制作日期: 2024-04-19

运用软件: Adobe Acrobat 9 Pro

TEL:0573-83225888-503 Http:www.yattool.com

名称: 说明书
客户: TH001
料号: 8458-Z021046001-011
成品尺寸: A6(102x145mm)
材质: 70g双胶纸

颜色: 黑白印刷
页数: 1.5张A4

备注:

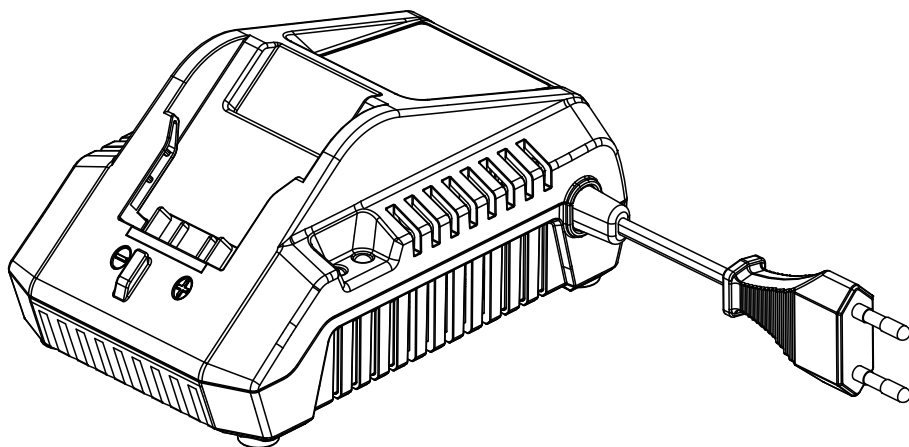


材质符合欧盟包装指令 (94/62/EC)



BATTERY CHARGER

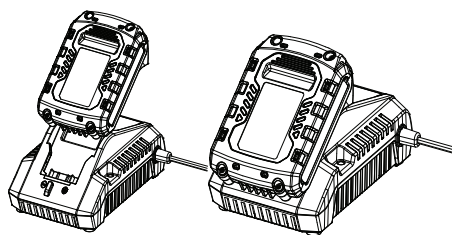
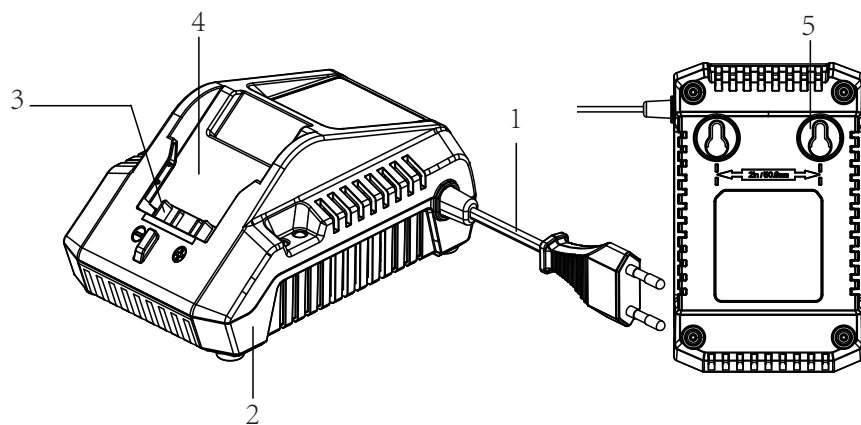
Model: CHX2



For customer service please find all information on www.senixtools.com
CAUTION: BEFORE USING THIS PRODUCT, READ THIS MANUAL AND
FOLLOW ALL ITS SAFETY RULES AND OPERATING INSTRUCTIONS.

ORIGINAL INSTRUCTIONS

1



2

TABLE OF CONTENTS

SAFETY & INTERNATIONAL SYMBOLS	3
SAFETY INSTRUCTIONS.....	4
KNOW YOUR UNIT.....	7
SPECIFICATIONS*	7
OPERATION.....	7
MAINTENANCE.....	8
TROUBLESHOOTING.....	8
RECYCLING AND DISPOSAL.....	9
PARTS.....	10

SAFETY & INTERNATIONAL SYMBOLS

Explanation of Safety & international symbols describes safety and international symbols and pictographs that may appear on this product. Read the operator's manual for complete safety, assembly, operating and maintenance and repair information.



Caution / Warning.



Read the operator's manual(s) and follow all warnings and safety instructions. Failure to do so can result in serious injury to the operator and/or bystanders.



For indoor use only.



Do not use in rain or wet conditions.



Positive terminal.



Negative terminal.



Protection Class II.



Remove plug from the mains immediately if the power cord/extension cord is damaged or cut.



If the current of the charger is higher than 3.15A(CHX2), the current to the outlet will be stopped by the fuse.

ta=40°C/E

Do not charge battery when temperature is above 40°C.



Waste electrical products must not be disposed of with household waste. Please recycle where facilities exist. Check with your local authorities or retailer for recycling advice.



The product complies with the applicable European directives and an evaluation method of conformity for these directives was done.

SAFETY INSTRUCTIONS

! WARNING!

Read all warnings and instructions. Failure to follow the warnings and instructions can cause electric shock, fire and / or serious injury. Save all warnings and instructions for future reference.

1. SAVE THESE INSTRUCTIONS
- This manual contains important safety and operating instructions for battery charger.
2. Before using battery charger, read all instructions and

- cautionary markings on battery charger and battery.
3. The appliance is designed to charge Li-Ion batteries.
 4. Non-rechargeable batteries cannot be charged with this battery charger.
 5. Use a power source with the voltage specified on the nameplate of the charger.
 6. Do not charge the battery in presence of flammable liquids or gases.
 7. Do not expose charger to rain or snow.
 8. Never carry charger by cord or yank it to disconnect from receptacle.
 9. After charging or before attempting any maintenance or cleaning, unplug the charger from the power source. Pull by plug other than cord whenever disconnecting charger.
 10. Make sure cord is located so that it will not be stepped on, tripped over, or otherwise subjected to damage or stress.
 11. Do not operate charger with damaged cord or plug - replace them immediately.
 12. Do not operate or disassemble charger if it has received a sharp blow, been dropped, or otherwise damaged in any way; take it to a qualified serviceman. Incorrect use or reassembly may result in a risk of electric shock or fire.
 13. The battery charger is not intended for young children or infirm persons without supervision.
 14. Young children should be supervised to ensure that they do not play with the battery charger.
 15. Do not charge battery when temperature is below 4°C or above 40°C.
 16. Do not attempt to use a step-up transformer, an engine generator or DC power receptacle.
 17. During charging, the battery must be placed in a well ventilated area. Keep the working area tidy to reduce the risk of fire, electric shock and explosion. Do not cover the charger and battery pack with a cloth while charging.
 18. When the appliance is not in use and before cleaning, unplug the appliance from the outlet.
 19. Indoor use only.
 20. To protect against the risk of electrical shock, do not immerse the unit, cord or plug in water or other liquid.
- Other warnings:**
1. The charger must not be used for non-rechargeable, ordinary batteries.
 2. Adequate ventilation is required.
 3. The information on current and voltage on the battery pack must comply with those of the charger.
 4. Do not expose the charger to water splashes and rain.
 5. Disconnect the equipment from the power supply before

- inserting or removing the batteries.
6. Do not throw exhausted or damaged batteries into water or fire. Environmental guidelines must be followed.
 7. A defective or not chargeable battery must be treated as special waste / hazardous waste. Put it in a special collection point. Do not throw it in the normal household waste neither into water or fire.
 8. Place the charger far from any heat source.
 9. To reduce the risk of electric shock, pull the plug instead of the power cord out from the socket, if you want to disconnect the charger from the mains.
 10. Do not disassemble the charger. Bring it to an authorized repair service, if service or repair is required. Improper installation can result in electrical shock, death and fire.
 11. This equipment is not intended for use by persons (including children) with reduced physical, sensory or mental capabilities, or lack of experience and knowledge, unless they have been given supervision or instruction concerning use of the product by a person responsible for their safety.
 12. This appliance can be used by children aged from 8 years and above and persons with reduced physical, sensory or mental capabilities or lack of experience and knowledge if they have been given supervision or instruction concerning use of the appliance in a safe way and understand the hazards involved. Children shall not play with the appliance. Cleaning and user maintenance shall not be made by children without supervision.
 13. Do not leave the equipment unattended while it is operating, to avoid the risk of fire, burns and electric shocks.
 14. If the power cord is damaged, it must be replaced by the manufacturer or its customer service or a similarly qualified person in order to avoid hazards.

INTENDED USE

Thank you for purchasing this product. Please read through these operating instructions and keep them for future reference.

Use this battery charger for X2 battery pack only.

If the product is damaged or has any defect, please do not use it and bring back it to your dealer.

If you give this tool to another people, please give him also this instruction manual.

Please note that our equipment has not been designed for use in commercial, trade professional usage or industrial applications.

KNOW YOUR UNIT

Model: CHX2

Use this charger for X2 battery pack only.

1	Power cord
2	Lower cover
3	Electrical contacts
4	Upper cover
5	Wall mounting hole

SPECIFICATIONS*

Model	CHX2
Rated Input Voltage	100-240V
Rated Input Power	50W
Compatible With Battery	Model: B20X2 21 Max Lithium Ion 2.0Ah, 36Wh
	Model: B40X2 21 Max Lithium Ion 4.0Ah, 72Wh
Input Frequency	50Hz/60Hz
Output Voltage	21±0.5V
Output Current	2±0.2A
Weight	0.34kg±0.01kg

OPERATION



WARNING:

Do not use the charger outdoors or expose it to wet or damp conditions. Water entering the charger will increase the risk of electric shock.

Explosive gases. Prevent Flames and sparkles. Provide adequate ventilation during charging.

HOW TO USE THE CHARGER

There are two positions can operate the charger:

- 1) Horizontal :Put the charger on a table horizontally and make it stabilize.
- 2) Vertical :Install two nails on a wall vertically , put the charger on the two nails fixedly.

Note: The charger has hanging hols for convenient storage. Install screws in the wall 2 inches (50.8 mm) apart. Use screws sufficiently strong to hold the combined weight of the charger.

HOW TO CHARGE THE BATTERY PACK



WARNING:

This Lithium-Ion battery pack is shipped partially charged. Fully charge the battery pack before using it for the first time.

Charge the Lithium-Ion battery pack only with the correct charger.

Connect the charger to a power supply, the light indicator of the charger turns red.

Align the raised ribs of the battery pack with the slot in the charger (Fig. 2).

Insert the battery pack into the charger, the light indicator of the charger turns green and it flashes.

The charger will communicate with the battery pack to evaluate the condition of the battery pack.

HOW TO REMOVE THE BATTERY PACK FROM THE CHARGER





It is fully charged that the four lights of the battery turn on. Disconnect the power


supply from the charger. Remove battery pack from the charger.

CHARGING A COLD BATTERY PACK

A cold battery pack may be placed directly onto the charger port but charging will not begin until the battery temperature warms to within acceptable temperature range. When a cold battery pack is placed on the charger, the charger may indicate the pack is not ready to charge. Please refer to charger operator’s manual. When the battery pack warms to approximately room temperature the charger will automatically begin charging.

CHARGER LIGHT INDICATOR

Lights	Light indicators	Status
One red light on		Power on
One green light flashing		Normal charging
One green light on		Charge over
One red light flashes at a frequency of 1Hz		Abnormal voltage of battery

Red light and green light flash alternately at a frequency of 1 Hz		Abnormal temperature of battery
--	---	---------------------------------

MAINTENANCE

CLEANING

Unplug before any cleaning work. Keep this charger free of debris and dirt. Wipe down the equipment with a cloth and/or compressed air. It is highly suggested that you clean the device after every use.

TRANSPORTATION

Disconnect the power supply before transportation, and place the charger into a box avoid being exposed to sunlight during the transportation.



WARNING:
The use of any accessory not specified in this manual may present a risk of personal injury.

Shorting the battery terminals together may cause burns or a fire. When battery pack is not in use, keep it away from other metal objects like paper clips, coins, keys, nails, screws, or other small metal objects that can make a connection from one terminal to another.

STORAGE

Keep the charger clean and clear of debris. Do not allow foreign material to get into the recessed cavity or onto the contacts. Wipe the charger clean with a dry cloth. Do not use solvents or water, and do not place the charger in wet conditions.

Unplug the charger when there is no battery in it.

Charge the battery before placing it in storage.

Store the charger at normal room temperature. Do not store it in excessive heat.

Do not use the charger in direct sunlight or in damp conditions. Do not charge outside. Recharge at room temperature. If the battery is hot, allow it to cool down before recharging.

Disconnect the power supply before maintenance or cleaning.

Repairs should only be carried out by qualified persons and using genuine spare parts. Inappropriate repairing could cause significant danger.

Always use bulbs according to specifications listed in this manual.

To maximize the life of the battery, Fully charge before storage.

- After charging, the battery pack may be stored in the charger, as long as the charger is not plugged in.
- Do not store the battery pack on the tool.
- Store the battery in a clean, dry place. Cover it in order to provide added protection.

ENVIRONMENTAL PROTECTION

Waste electrical products must not be disposed of with household waste.

According to the European Battery Directive, defective or used battery packs/ batteries, must be collected separately and disposed of in an environmentally correct manner. Please recycle where facilities exist. Check with your local authorities or retailer for recycling advice. It will then be recycled or dismantled in order to reduce the impact on the environment and for human health since they contain hazardous substances.

TROUBLESHOOTING

Suspected malfunctions are often due to causes that the users can fix themselves. Therefore, check the product using this section. In most cases the problem can be solved quickly.

PROBLEM	POSSIBLE CAUSE	SOLUTION
The charger doesn't work	The charger is charging abnormally	Contact an authorized service center.
	The charger broken	Contact an authorized service center.
Red light and green light flash alternately at a frequency of 1 Hz during operation	Temperature out of working range of the battery pack	Remove the battery pack from the charger, wait for 15 minutes to cool down.

If further assistance is required, take the unit to a qualified service dealer.

RECYCLING AND DISPOSAL



Disposal of waste electric and electronic equipment (WEEE)

Waste electric and electronic equipment shall not be disposed of with household waste. Please recycle where facilities exist. Check with your local authority for recycling advice.



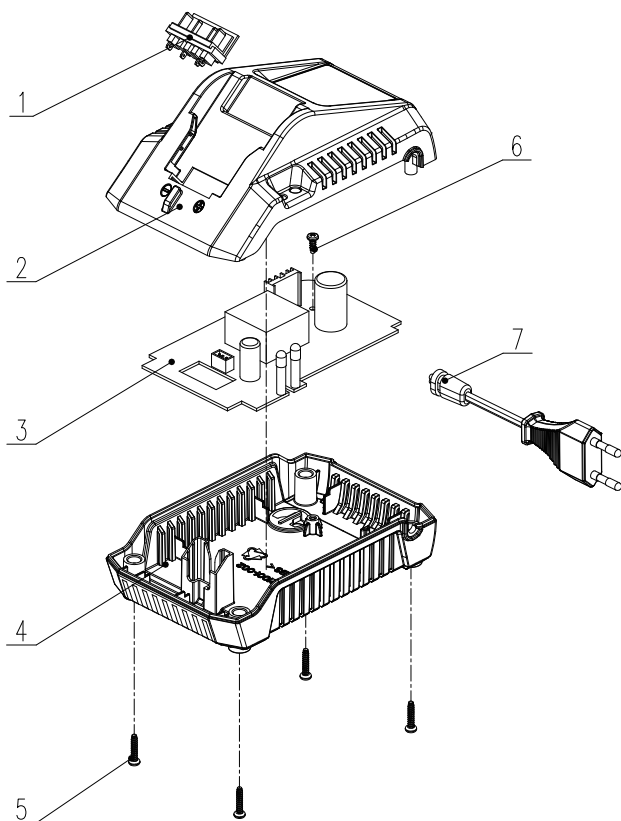
Disposal of defective or used battery pack

Discharge your battery pack by operating your tool, then remove the battery pack from the tool. Cover the battery pack connections with heavy duty adhesive tape to prevent short circuit and energy discharge.

Do not attempt to open or remove any of the components.

Batteries and battery packs shall not be disposed of with household waste. Consult your local waste authority for information regarding available recycling and/or disposal options.

PARTS



No.	Part #	Description	Qty.
1	Z021046-002-00	Upper cover	1
2	Z021001-002-00	Lower cover	1
3	8SJEB30-14	Hex Socket Pan Head Screw	4
4	8SJAB30-06	Self tapping screw	1
5	8440-806801-01	Charger contact bracket assembly	1
6	Z021046-003-00	Electric component	1
7	8422-805101-00	Charger power cable	1

