



设计人员: 金陈涛

邮箱: chentao.jin @yat.com

制作日期: 2024-04-19

运用软件: Adobe Acrobat 9 Pro

TEL:0573-83225888-503 Http:www.yattool.com

名称: 说明书
客户: TH001
料号: 8458-Z011070001-011
成品尺寸: A7(74x105mm)
材质: 70g双胶纸

颜色: 黑白印刷
页数: 1张A4

备注:

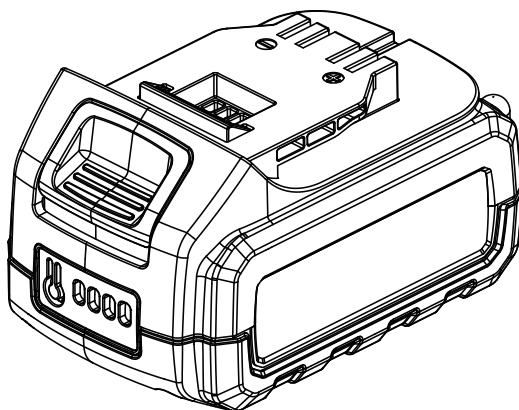
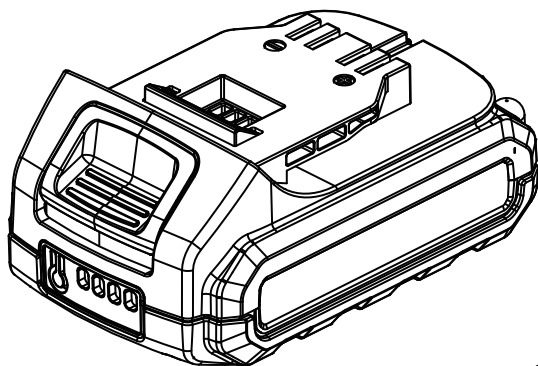


材质符合欧盟包装指令 (94/62/EC)



BATTERY PACK

Model: B20X2
B40X2



For customer service please find all information on www.senixtools.com
CAUTION: BEFORE USING THIS PRODUCT, READ THIS MANUAL AND
FOLLOW ALL ITS SAFETY RULES AND OPERATING INSTRUCTIONS.

ORIGINAL INSTRUCTIONS

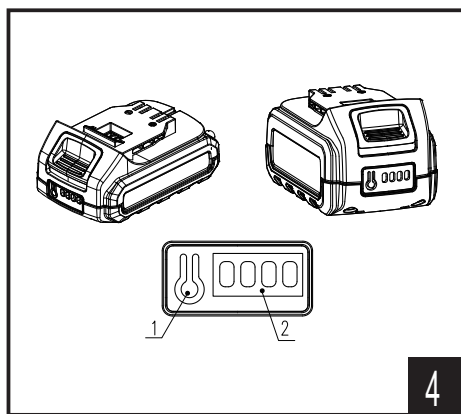
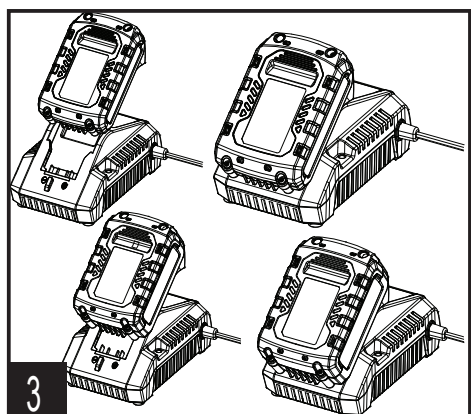
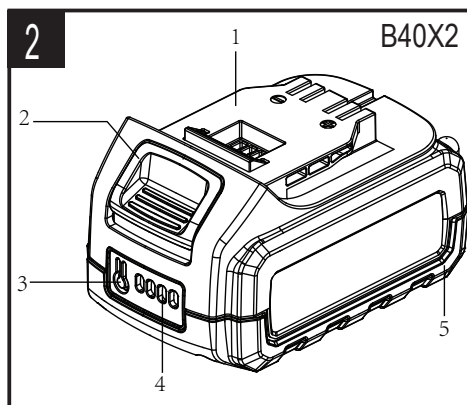
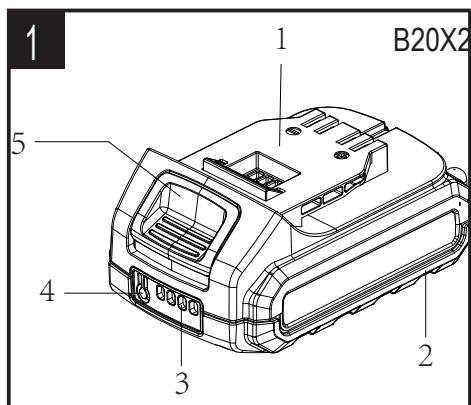


TABLE OF CONTENTS

SAFETY & INTERNATIONAL SYMBOLS	3
SAFETY INSTRUCTIONS.....	3
KNOW YOUR UNIT.....	6
SPECIFICATIONS*	6
OPERATION.....	6
MAINTENANCE.....	8
TROUBLESHOOTING.....	9
RECYCLING AND DISPOSAL.....	9
PARTS.....	10

SAFETY & INTERNATIONAL SYMBOLS

Explanation of Safety & international symbols describes safety and international symbols and pictographs that may appear on this product. Read the operator's manual for complete safety, assembly, operating and maintenance and repair information.



Caution / Warning.



To reduce the risk of injury, user must read instruction manual.



Do not use in rain or wet conditions.



Do not dispose of battery packs in rivers or immerse in water.



Do not dispose of battery packs in fire. They will explode and cause injury.



Use and store the battery within an temperature below 40°C.



Do not disassemble, crush, heat above 100°C ; Never expose the battery to microwaves or high pressures.



The product complies with the applicable European directives and an evaluation method of conformity for these directives was done.



Recycling packaging reduces the need for landfill and raw materials. Reuse of recycled material decreased pollution in the environment. Please recycle packing where facilities exist.



Li-ion battery. This product has been marked with a symbol relating to 'separate collection' for all battery packs and battery pack. It will then be recycled or dismantled in order to reduce the impact on the environment.

SAFETY INSTRUCTIONS

! WARNING!

Read all warnings and instructions. Failure to follow the warnings and instructions can cause electric shock, fire and / or serious injury. Save all warnings and instructions for future reference.

- Do not dismantle, open or shred secondary cells or batteries.
- Keep batteries out of the reach of children. Battery usage by children should be supervised. Especially keep small batteries out of reach of small children.
- Seek medical advice immediately if a cell or a battery has been swallowed.
- Do not expose cells or batteries to heat or fire. Avoid storage in direct sunlight.
- Do not short-circuit a cell or a battery. Do not store cells or

- batteries haphazardly in a box or drawer where they may short-circuit each other or be short-circuited by other metal objects.
- f. Do not remove a cell or battery from its original packaging until required for use.
 - g. Do not subject cells or batteries to mechanical shock.
 - h. In the event of a cell leaking, do not allow the liquid to come in contact with the skin or eyes. If contact has been made, wash the affected area with copious amounts of water and seek medical advice.
 - i. Do not use any charger other than that specifically provided for use with the equipment.
 - j. Observe the plus (+) and minus (-) marks on the cell, battery and equipment and ensure correct use.
 - k. Do not use any cell or battery which is not designed for use with the equipment.
 - l. Do not mix cells of different manufacture, capacity, size or type within a device.
 - m. Always purchase the battery recommended by the device manufacturer for the equipment.
 - n. Keep cells and batteries clean and dry.
 - o. Wipe the cell or battery terminals with a clean dry cloth if they become dirty.
 - p. Secondary cells and batteries need to be charged before use. Always use the correct charger and refer to the manufacturer's instructions or equipment manual

- for proper charging instructions.
- q. Do not leave a battery on prolonged charge when not in use.
 - r. After extended periods of storage, it may be necessary to charge and discharge the cells or batteries several times to obtain maximum performance.
 - s. Retain the original product literature for future reference.
 - t. Use the cell or battery only in the application for which it was intended.
 - u. When possible, remove the battery from the equipment when not in use.
 - v. Dispose of properly.

Battery tool use and care

- a. Recharge only with the charger specified by the manufacturer. A charger that is suitable for one type of battery pack may create a risk of fire when used with another battery pack.
- b. When battery pack is not in use, keep it away from other metal objects, like paper clips, coins, keys, nails, screws or other small metal objects, that can make a connection from one terminal to another. Shorting the battery terminals together may cause burns or a fire.
- c. Under abusive conditions, liquid may be ejected from the battery; avoid contact. If contact accidentally occurs, flush with water. If liquid contacts eyes, additionally seek medical help. Liquid ejected from the battery may cause irritation or burns.

- d. Do not use a battery pack that is damaged or modified. Damaged or modified batteries may exhibit unpredictable behaviour resulting in fire, explosion or risk of injury.
- e. Do not expose a battery pack to fire or excessive temperature. Exposure to fire or temperature above 130 °C may cause explosion.
- f. Follow all charging instructions and do not charge the battery pack outside the temperature range specified in the instructions. Charging improperly or at temperatures outside the specified range may damage the battery and increase the risk of fire.

Please note that our equipment has not been designed for use in commercial, trade professional usage or industrial applications.

Service

- a. Have your battery pack serviced by a qualified repair person using only identical replacement parts.
- b. Never service damaged battery packs. Service of battery packs should only be performed by the manufacturer or authorized service providers.

INTENDED USE

Thank you for purchasing this product. Please read through these operating instructions and keep them for future reference.

Use this battery pack for X2 products only.

If the product is damaged or has any defect, please do not use it and bring back it to your dealer.

If you give this tool to another person, please give him also this instruction manual.

KNOW YOUR UNIT

Model: B20X2

1	Upper Cover	4	Light Button
2	Lower Cover	5	Unlock Button
3	Light Indicator		

Model: B40X2

1	Upper Cover	4	Light Indicator
2	Unlock Button	5	Lower Cover
3	Light Button		

Use both two battery packs for X2 products only. Charge only with chargers CHX2 and CHQX2.

SPECIFICATIONS*

Model:	B20X2
Lithium Battery:	20V Max. 2.0Ah, 36Wh
Weight:	335g
Compatible with Charger:	CHX2
Charger Input:	100-240V, 50/60Hz
Charger Output:	21±0.5V, 2±0.2A
Charging Time:	75 minutes
Optimal Charging Temperature:	20°C-25°C

Model:	B40X2
Lithium Battery:	20V Max. 4.0Ah, 72Wh
Weight:	650g
Compatible with Charger:	CHX2

Charger Input:	100-240V, 50/60Hz
Charger Output:	21±0.5V, 2±0.2A
Charging Time:	140 minutes
Optimal Charging Temperature:	20°C-25°C

OPERATION



WARNING:

Before using your battery pack be sure to read the instruction manual carefully.

This battery pack has been shipped completely assembled. Carefully remove the battery pack from the box.

WHEN TO CHARGE THE BATTERY PACK

This battery pack is shipped in a low charge condition to prevent possible problems. Therefore, you should charge prior to first use.

This battery pack can be charged at any time. It is necessary to press the light button to see whether the battery pack needs to be charged.

When charging, it is important to provide adequate ventilation to avoid this battery pack becomes damaged.

HOW TO CHARGE THE BATTERY PACK



WARNING:

This Lithium-Ion battery pack is shipped partially charged. Fully charge the battery pack before using it for the first time.

Charge the Lithium-Ion battery pack only with the correct charger.
Connect the charger to a power supply, the

light indicator of the charger turns red.
Align the raised ribs of the battery pack with the slot in the charger (Fig. 3).
Insert the battery pack into the charger, the light indicator of the charger turns green and it flashes.
The charger will communicate with the battery pack to evaluate the condition of the battery pack.

HOW TO REMOVE THE BATTERY PACK FROM THE CHARGER

It is fully charged that the four lights of the battery turn on. Disconnect the power supply from the charger. Remove battery pack from the charger.

HOW TO REMOVE THE BATTERY PACK FROM THE TOOL

Make the tool stop completely.Press the unlock button on the battery pack and slide battery pack from the tool.

CHARGING A HOT BATTERY PACK

When using a tool continuously, the battery pack may become hot. A hot battery pack may be placed directly onto the charger port but charging will not begin until the battery temperature cools to within acceptable temperature range. When a hot battery pack is placed on the charger, the charger may indicate the pack is not ready to charge. Please refer to charger operator's manual. When the battery pack cools the charger will automatically begin charging.

CHARGING A COLD BATTERY PACK

A cold battery pack may be placed directly onto the charger port but charging will not begin until the battery temperature warms to within acceptable temperature range. When a cold battery pack is placed on

the charger, the charger may indicate the pack is not ready to charge. Please refer to charger operator's manual. When the battery pack warms to approximately room temperature the charger will automatically begin charging.


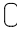







NOTE:

Longest life and best performance can be obtained if the battery pack is charged when the air temperature is between 18°C and 24°C. DO NOT charge the battery pack in an air temperature below 4°C, or above 40°C. This is important and will prevent serious damage to the battery pack.

CHARGING INDICATOR

Press the light button (1) to check the battery pack whether needs to charge (Fig. 4).

Light indicator (2)			Status
Lighted	Off	Blinking	
			
			The battery is at full capacity.
			The battery is at 75% capacity.
			The battery is at 50% capacity and requires charging.

	<p>The battery is less than 25% capacity and requires charging soon.</p>
---	--



WARNING:

Malfunctions may occur when the four lights blinking in turns.



NOTE:

Red LED and green LED flash alternately at a frequency of 1Hz indicates the abnormal temperature of battery.

Red LED flashes at a frequency of 1Hz but green LED off when abnormal voltage come to the battery.

OVERHEAT PROTECTION

When the tool/battery is overheated, the tool stops automatically. In this situation, let the power tool/battery cool before turning the tool on again.

OVERDISCHARGE PROTECTION

When the battery capacity is not enough, the tool stops automatically. In this case, remove the battery from the tool and charge the battery.

MAINTENANCE

BATTERIES

These batteries have been designed to provide maximum troublefree life. However, like all batteries, they will eventually wear out. Do not disassemble battery pack and attempt to replace the batteries. Handling of these batteries, especially when wearing rings and jewelry, could result in a serious burn.

To obtain the longest possible battery life, we suggest the following:
Remove the battery pack from the charger once it is fully charged and ready for use.

CLEANING

Unplug before any cleaning work. Keep this battery pack free of debris and dirt. Wipe down the equipment with a cloth and/or compressed air. It is highly suggested that you clean the device after every use.

TRANSPORTATION

Take the battery pack from the tool, and place it into a box avoid being exposed to sunlight during the transportation. Not forget the charger when the battery is transported.

Protect the battery pack from any heavy impact or strong vibrations which may occur during the transportation in vehicles. Do not take or send the battery pack by airplane.

STORAGE

After charging, the battery pack may be stored in the charger, as long as the charger is not plugged in.

Do not store the battery outside or in vehicles. Store the battery within an temperature between 4°C and 40°C. Store the battery in a clean, dry place. Cover it in order to provide added protection.

When battery pack is not in use, keep it away from other metal objects like paper clips, coins, keys, nails, screws, or other small metal objects that can make a connection from one terminal to another. For battery pack storage longer than 30 days or in winter:


Store the battery pack where the temperature is ranging from 4°C to 40°C and away from moisture.
Store battery packs in a 25 %-50%

charged condition.
Every six months of storage, charge the pack as normal.
Keep dry.
Do not to store close to furnaces, stoves are water heaters.
Secondary cells and batteries give their best performance when they are operated at normal room temperature (20 °C ± 5 °C).

TROUBLESHOOTING

Suspected malfunctions are often due to causes that the users can fix themselves. Therefore, check the product using this section. In most cases the problem can be solved quickly.

PROBLEM	POSSIBLE CAUSE	SOLUTION
The battery pack doesn't work	The battery pack is running out of the power	Charge the battery pack.
	Battery pack broken	Contact an authorized service center.
Four red lights flashed in turn during the operation	Temperature out of working range	Stop the tool,remove the battery pack from the tool,wait for 15 minutes to cool down.




Power tools that are no longer usable should not be disposed of with household waste but in an environmentally friendly way. Please recycle where facilities exist. Check with your local council authority for recycling advice.

This battery pack contains Li-ion batteries. Consult your local waste authority for information regarding available recycling and/or disposal options.
Discharge your battery pack by operating your tool, then remove the battery pack from the tool housing and cover the battery pack connections with heavy-duty adhesive tape to prevent short circuit and energy discharge. Do not attempt to open or remove any of the components.

ENVIRONMENTAL PROTECTION
Waste electrical products must not be disposed of with household waste. According to the European Battery Directive, defective or used battery packs/ batteries, must be collected separately and disposed of in an environmentally correct manner. Please recycle where facilities exist. Check with your local authorities or retailer for recycling advice. It will then be recycled or dismantled in order to reduce the impact on the environment and for human health since they contain hazardous substances.

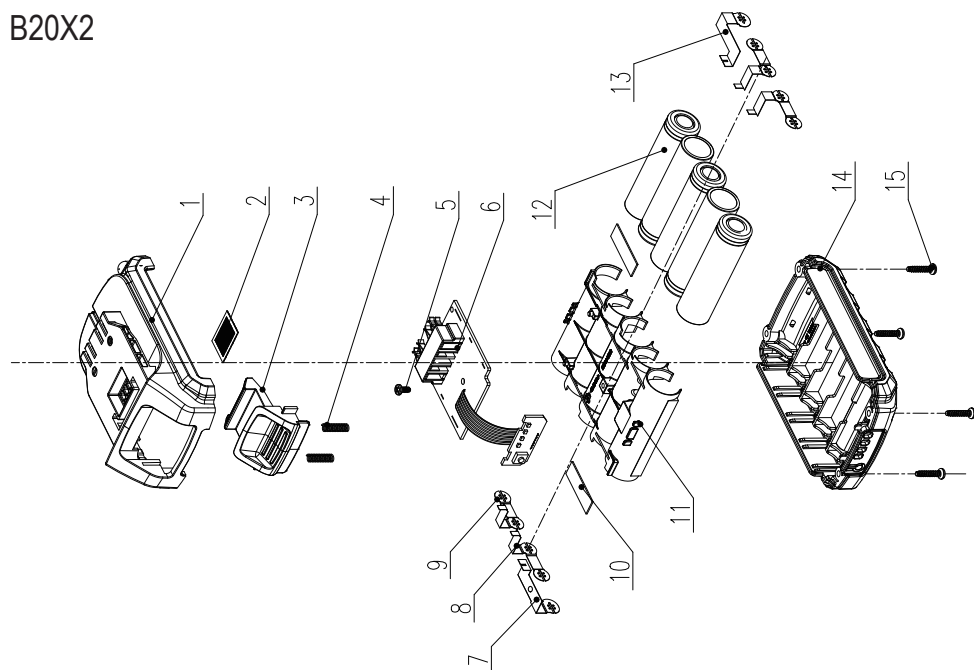
RECYCLING AND DISPOSAL



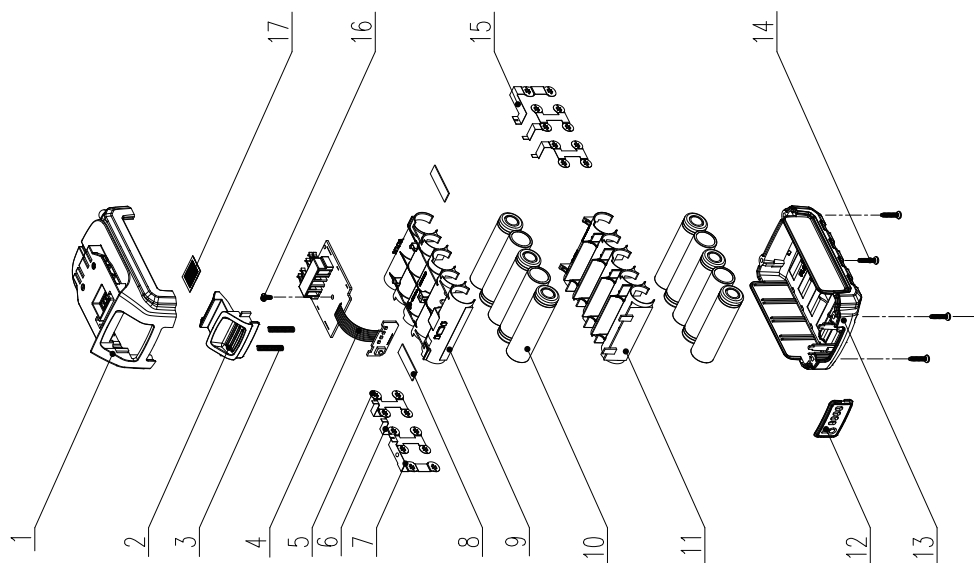
To preserve natural resources, please recycle or dispose of the battery pack properly.

PARTS

B20X2



B40X2



B20X2

No.	Part #	Description	Qty.
1	Z011061-004-00	Button	1
2	8321-801901-01	Nickel sheets	2
3	Z011060-004-00	Lower cover	1
4	8292-801901-01	Bracket	1
5	Z011060-002-00	Electric component	1
6	Z011060-003-00	Upper cover	1
7	8321-801902-01	Nickel sheets	2
8	8321-801903-01	Nickel sheets	1
9	Z011027-006-00	Nickel sheets	1
10	8408-802112-00	Battery	5
11	Z021051-007-00	Anti-dust net	1
12	Z011030-004-00	Thermal insulation gasket	2
13	8342-535702-00	Rotary push button spring	2
14	8SJEB30-14	Hex Socket Pan Head Screw	4
15	8SJAB30-06	Self tapping screw	1

B40X2

No.	Part #	Description	Qty.
1	Z011061-002	Upper cover	1
2	Z011061-004	Button	1
3	8342-491101	Push button spring	2
4	Z011061-006	Electric assembly	1
5	Z011031-003	Nickel sheets	2
6	Z011031-004	Nickel sheets	2
7	Z011031-006	Nickel sheets	1
8	Z011030-004	Thermal insulation gasket	2
9	8292-801901	Bracket	1
10	8408-802112	Battery	10
11	8292-802001	Bracket under battery	1
12	Z011061-005	Lampshade	1
13	Z011061-003	Lower cover	1
14	8SJEB30-14	Hexagon socket pan head tapping screws	4
15	Z011031-005	Nickel sheets	1
16	8SJAB30-06	Self tapping screw	1
17	Z021051-007	Anti-dust net	1

